



Microsoft Identity Manager Status, roadmap, and the path to 9 January 2029

INNOFACTOR

Microsoft Identity Manager — status, roadmap, and the path to 9 January 2029

Microsoft Identity Manager (MIM) 2016 SP2 stays in extended support until 9 January 2029. With less than three years on the clock and Microsoft's clear cloud-first direction, every MIM-running organisation needs an active plan. Innofactor's IAM team has supported FIM and MIM since the early days and now leads identity modernisation programmes across the Nordics — we can help you stay supported, migrate to Microsoft Entra ID Governance, or run both side-by-side.

Current MIM status (May 2026)

- Latest hotfix: **4.7.6.0** released 22 April 2026
- Latest MIM CM build: 4.6.359.0

Reference: [Microsoft Identity Manager version release history](#)

Service Pack 3

Microsoft has confirmed SP3 will publish updated platform support for customers staying on MIM through 2029. Expected additions:

- Windows Server 2025/SQL Server 2022
- SharePoint Server Subscription Edition
- Exchange Server SE / 2019 compatibility
- Azure SQL with managed identity authentication

A specific release date has not been announced.

Support end dates

- **MIM 2016 SP3 — 9 January 2029** (extended from the original 13 January 2026 date)
- FIM 2010 R2 SP1 — out of support since 11 October 2022
- SharePoint Foundation 2013 — out of support since 11 April 2023
- SharePoint Server 2019 (under the FIM Portal) — out of support Jul 14, 2026
- Microsoft Entra MFA Server — service ended 30 September 2024
- MIM Hybrid Reporting cloud endpoints — removed November 2025; replace with Azure Monitor

Currently supported platforms (MIM 2016 SP2 + latest hotfix)

Component	Supported
Windows Server	Windows Server 2019, 2022 (2016 not recommended)
SQL Server	SQL Server 2019, 2022 (2016 SP3 not recommended)
SharePoint	SharePoint Server SE (2019 not recommended)
Outlook add-in	Outlook for Microsoft 365
Client add-ins / PAM PowerShell	Windows 11
Other prerequisites	TLS 1.2-only environments supported · .NET Framework 4.6 or higher

Reference: [Microsoft: Supported platforms for MIM 2016](#)

If you plan to stay on MIM until 9 January 2029

If MIM remains in production for the next 2–3 years, the platform underneath it must stay current.

- Move MIM Sync, Service, Portal, and Reporting to **Windows Server 2022**
- Move the databases to **SQL Server 2022**
- Move the Portal to **SharePoint Subscription Edition**
- Replace deprecated dependencies: Azure AD Connector for FIM → Microsoft Entra Connect Sync or Microsoft Graph Connector; Entra MFA Server → custom MFA, Windows Hello for Business, or smartcard authentication; MIM Hybrid Reporting → Azure Monitor

The path forward — Microsoft Entra ID Governance

Microsoft's investment in identity governance now goes to Microsoft Entra ID Governance: Lifecycle Workflows, Access Packages, Access Reviews, and Privileged Identity Management. Most MIM scenarios have a modern equivalent. Some — on-premises certificate management, bastion-forest PAM, deeply customised connectors — need a hybrid plan.

Realistic migration timelines for medium and large estates run 12–36 months. Starting in 2026 leaves a working margin; starting in 2028 does not.

Innofactor Half-Day MIM Transition Workshop

Don't guess your way to 2029. Our Half-Day MIM Transition Workshop is a fixed-scope engagement that helps you decide **when, how, and to what** MIM should be replaced — or how to safely maintain it in the interim.

The workshop covers:

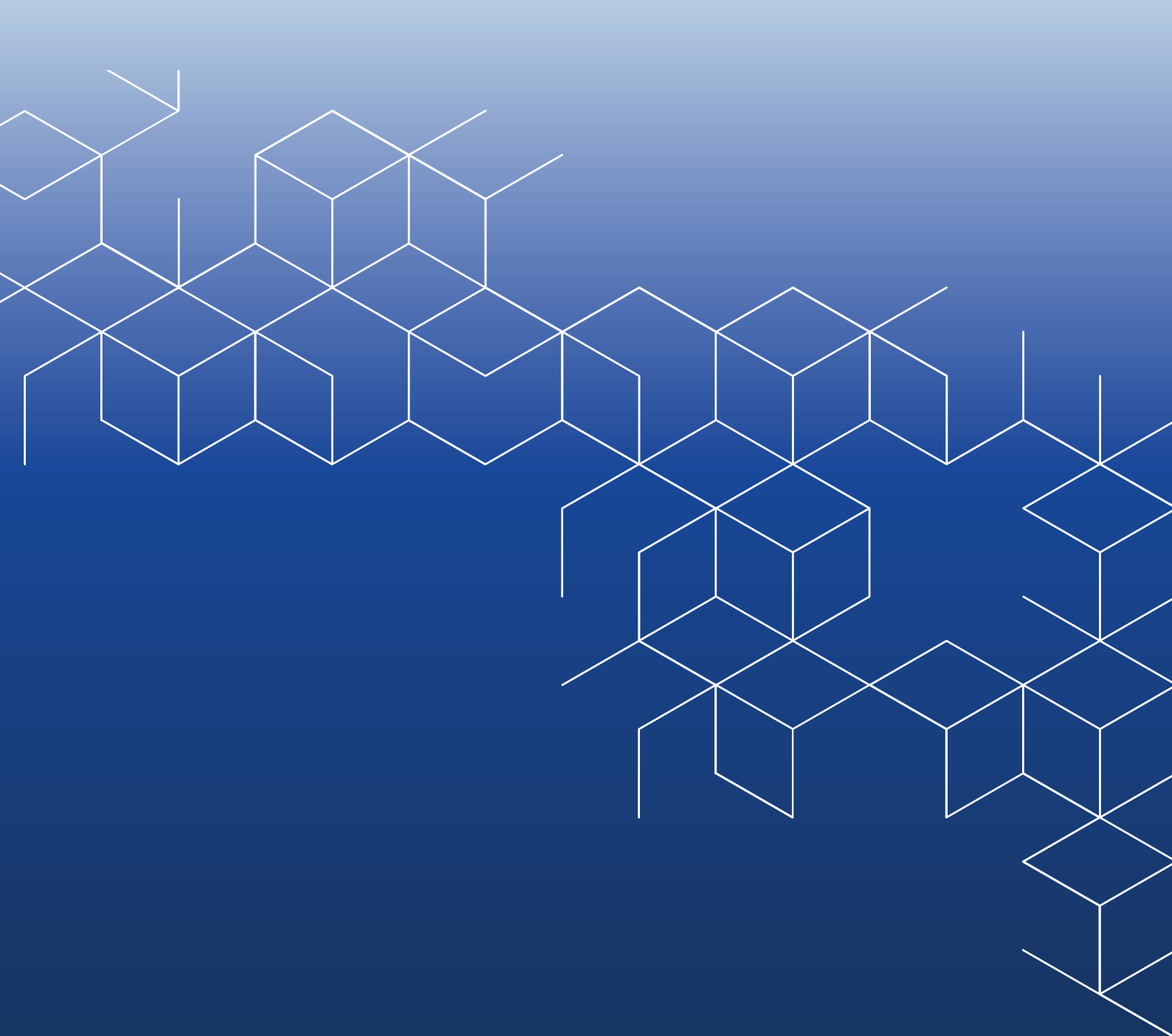
- **Current state** — how MIM is used today, key dependencies, critical systems
- **Future readiness** — cloud, hybrid, or on-prem constraints; identity master data sources
- **Solution options** — modern Microsoft identity capabilities, complementary platforms, pros and cons of each migration path
- **Next steps & roadmap** — recommended way forward, immediate actions vs. longer-term plan

From there we deliver platform refresh, migration to Microsoft Entra ID Governance, hybrid coexistence, and managed services.

Book a Half-Day MIM Transition Workshop to reduce risk, avoid rushed decisions, and plan your MIM rampdown with confidence.

[Contact Us](#)





INNOFACTOR